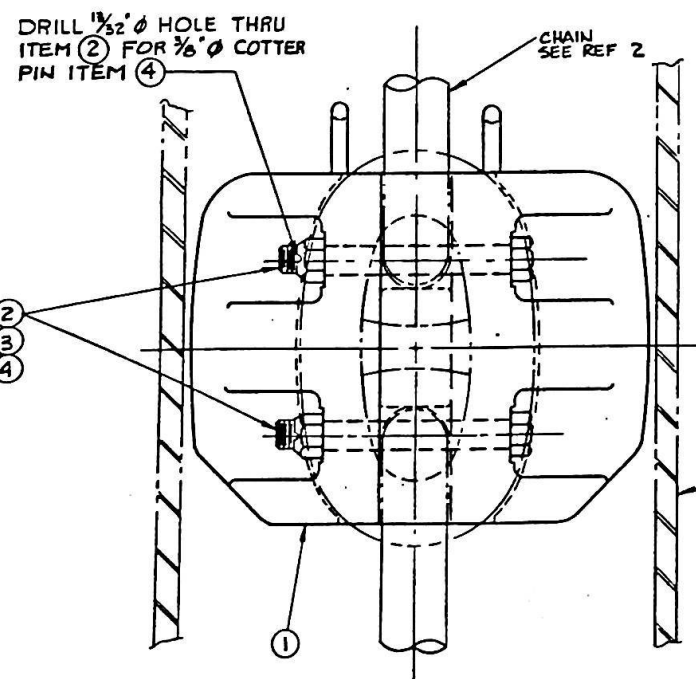
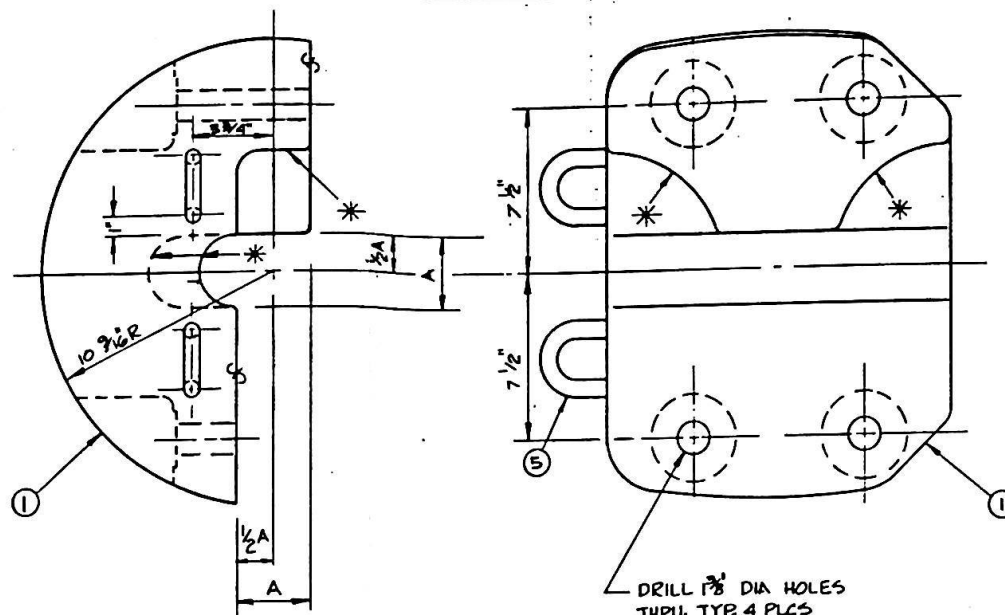


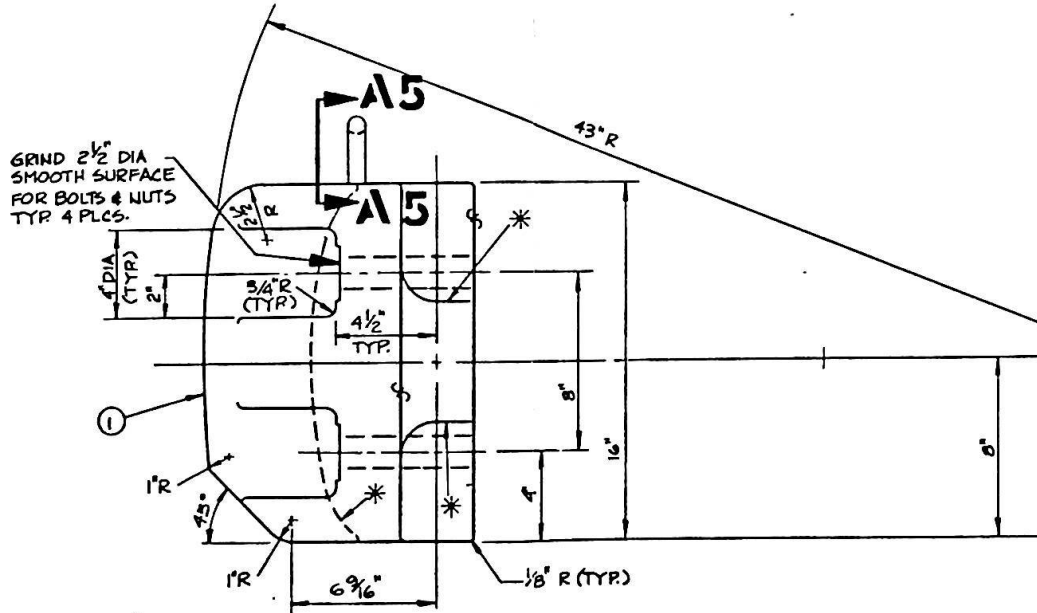
PLAN VIEW C7
SCALE: 1/4 SIZE



ASSEMBLY A7
SCALE: 1/4 SIZE



DETAIL 135 AS SHOWN
SCALE: 1/4 SIZE



SECTION A5
SCALE: FULL SIZE

CHAIN SIZE (INS)	PROJECT NO	1/2 A INS	A INS	*
2 1/4		1 1/4	2 1/2	
2 5/16		1 9/32	2 9/16	
2 3/8		1 5/16	2 5/8	
2 7/16		1 17/32	2 11/16	
2 1/2		1 3/8	2 3/4	
2 9/16		1 13/32	2 13/16	
2 5/8		1 7/16	2 7/8	
2 11/16		1 15/32	2 15/16	
2 3/4		1 1/2	3	
2 13/16		1 17/32	3 1/16	
2 7/8		1 9/16	3 1/8	
2 15/16		1 19/32	3 3/16	
3		1 5/8	3 1/4	
3 1/16		1 21/32	3 5/16	
3 1/8		1 11/16	3 3/8	
3 3/16		1 23/32	3 7/16	
3 1/4	1191	1 3/4	3 1/2	
3 5/16		1 25/32	3 9/16	
3 3/8		1 13/16	3 5/8	
3 7/16		1 27/32	3 11/16	
3 1/2		1 7/8	3 3/4	
3 3/4		2	4	
3 7/8		2 1/16	4 1/8	
4		2 1/8	4 1/4	
4 1/8		2 3/16	4 3/8	
4 1/4		2 1/4	4 1/2	

SHAPES TO BE TEMPLATED FROM CHAINS

ITEM	DESCRIPTION	SPEC	QTY	SHT
5	3/4" DIA. R.B.	A-36	4	
4	3/8" COTTER PIN, SEE NOTE	316SS	4	
3	1 1/4"-BUN HEX HD CASTLE NUT	A-36 GR 8M	4	
2	1 1/4"-BUN HEX HD BOLT 10 1/2" LG	A-36 GR 8M	4	
1	RUBBING CASTING DETAIL (AS SHOWN) MATERIAL-CAST STEEL	A-27 GR 70-40	1	

IMODCO ASICA INTERNATIONAL		1080 WILSHIRE BLVD. SUITE 1100 LOS ANGELES, CA, U.S.A. 90024
CLIENT	CPC	PROJECT
DIMENSION TOLERANCES SEE SPECIFICATIONS		TITLE RUBBING CASTING ASSEMBLY & DETAILS
DO NOT SCALE DRAWING DRAWN: WDG CHECKED: [Signature] REVIEWED: [Signature] APPROVED: [Signature]		SCALE DWG. NO. 1191-852

AS BUILT

REFERENCES		
NO.	TITLE	DRAWING NO.
1	11 METER BUOY DECK PLAN	1191-001
2	MOORING PLAN	1191-850
3		
4		
5		
6		
7		
8		
REVISIONS		
NO.	DESCRIPTION	DATE
A	ISSUED FOR BID	4/1/86
B	ISSUED FOR CONSTRUCTION	6/1/86
C	AS BUILT	9/15/86